

**KINGMAN
GROUP** 

St John of God Murdoch Hospital

Sky Sign Project

CASE STUDY

www.kingman.com.au
450 Victoria Rd, Malaga WA 6090

“We approached Kingman with a very specific brief and through effective collaboration during planning and execution, the team absolutely exceeded our desired end goal on the sky sign project.”

Ben Edwards

Chief Executive Officer, St John of God Murdoch Hospital



Table of contents



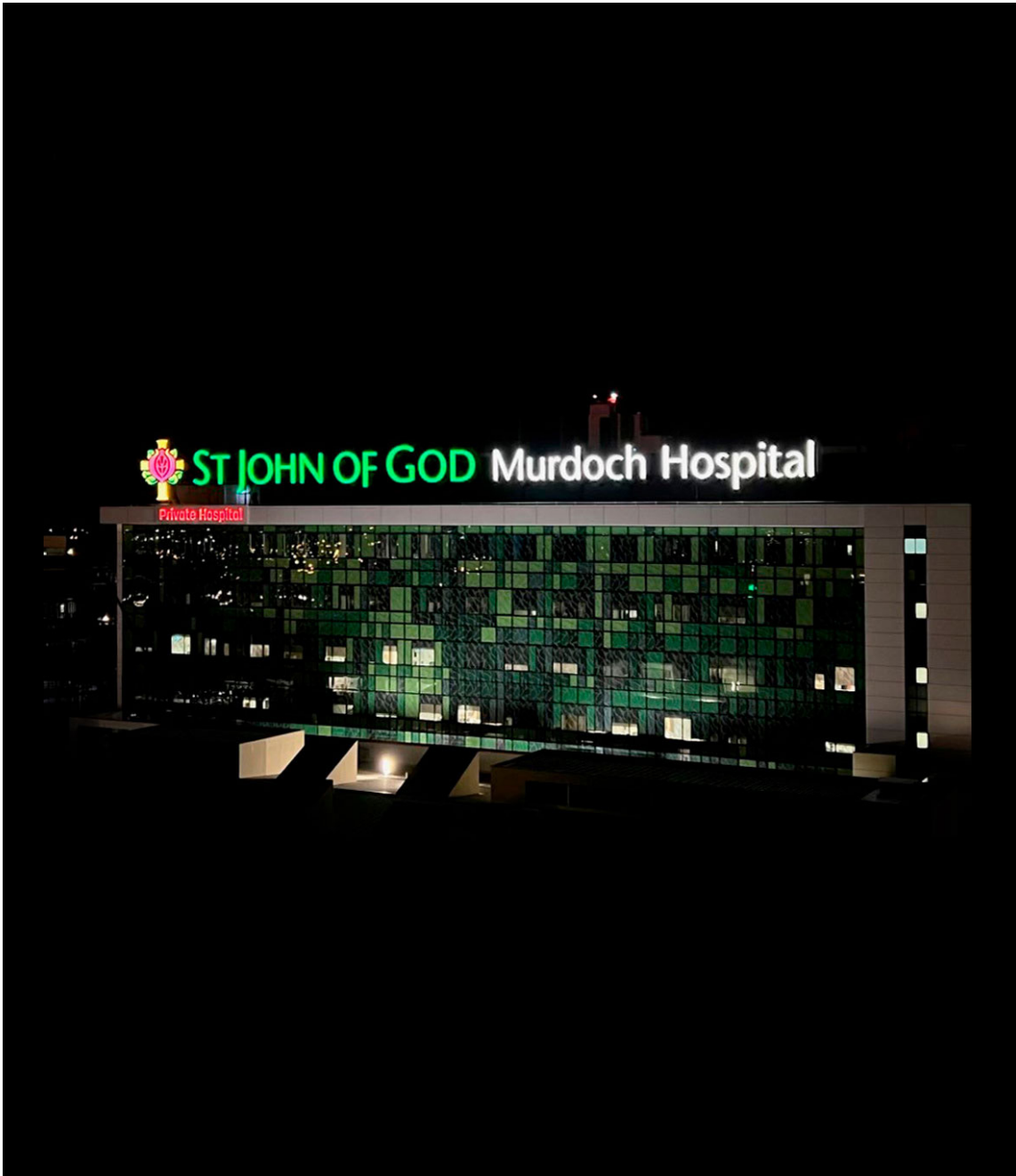
04 Introduction

05 Behind The Scenes

09 Lightbox

12 Sky Sign

18 The Installation



Introduction

In mid 2021 Kingman was awarded approval to fabricate and install what would later become the largest sky sign in Australia.

St John of God Murdoch Hospital's CEO Ben Edwards brought it to our attention that the building had no branding, and no way of being identified. It was clear to him that they needed a sign. But not just any sign...

Upon the original conception, the sign was drawn up to be half way across the building, and spanning a sizeable 36 meters in length. After some conversations back and forth between Kingman and the client it was decided that this was not big enough... not visible enough!



Behind The Scenes

The process of refinement is an important one, with one end goal in mind; Creating something exceptional that fulfills the brief of the client.

It was clear that the sign needed to be larger, and larger again, in order to be seen “from the moon!”. In the end, the designs were finalised, with a 56 meter long sign and an 8.7 meter lightbox to be placed upon the very top of the building.



Behind the scenes in Kingman's yard, signs waiting to be loaded on to the truck.



Behind The Scenes

With such a large and heavy sign to be installed so high up, approval from the DA proved to be a lengthy process. Kingman and SJGMH worked on the logistics with Nick Gileno from Silver Thomas Hanley to receive the necessary approvals from both the council, and Jandakot Airport.

After going through the building application together, we were given the go ahead mid 2021 to install the sign. The building then needed to be reclad prior to install taking place meaning we had to wait until April 2022 to action the project.



Fabrication of the Private Hospital Lightbox Sign in the Kingman factory



Behind The Scenes

Sign types throughout the project include:

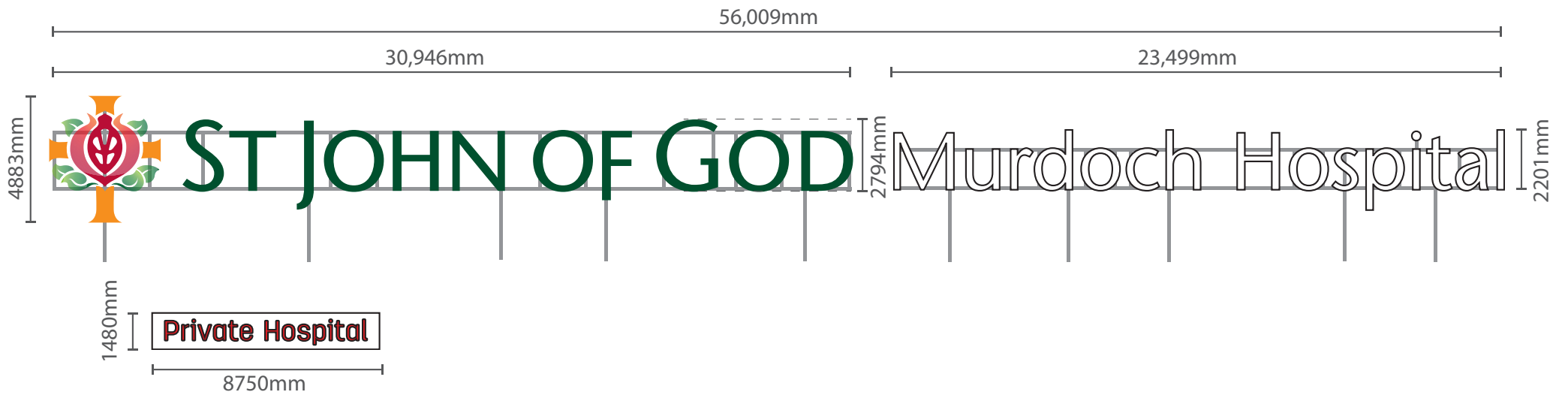
- Huge Lightbox
- External Sky Signs

Client

- St John Of God Murdoch Hospital

Partners

- Silver Thomas Hanley
- Collect Electrical
- Ashburton Crane Hire
- Boom Logistics





Lightbox

The Private Hospital lightbox is a huge 8.7 metres in length. In isolation, this sign is an impressive one, however when placed next to the logo and lettering “St John of God Murdoch Hospital”, it looks tiny in comparison!

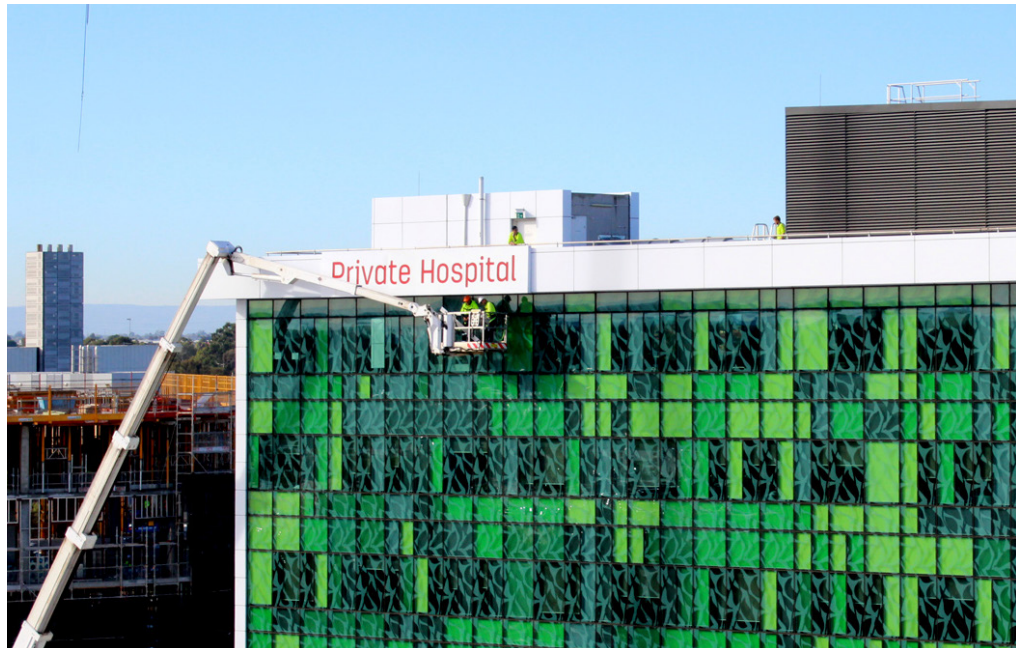
The sign case was made out of aluminium with perforated red lettering and red LED.

The Private Hospital lightbox went up first, requiring a boom lift and crane to secure it in place. This required two installers in the boom lift as well as two on the roof to oversee the correct positioning.



Private Hospital







Sky Sign

The rest of the sign was made up of no less than 6 separate parts. Each part was lifted and welded into place one by one in this order:

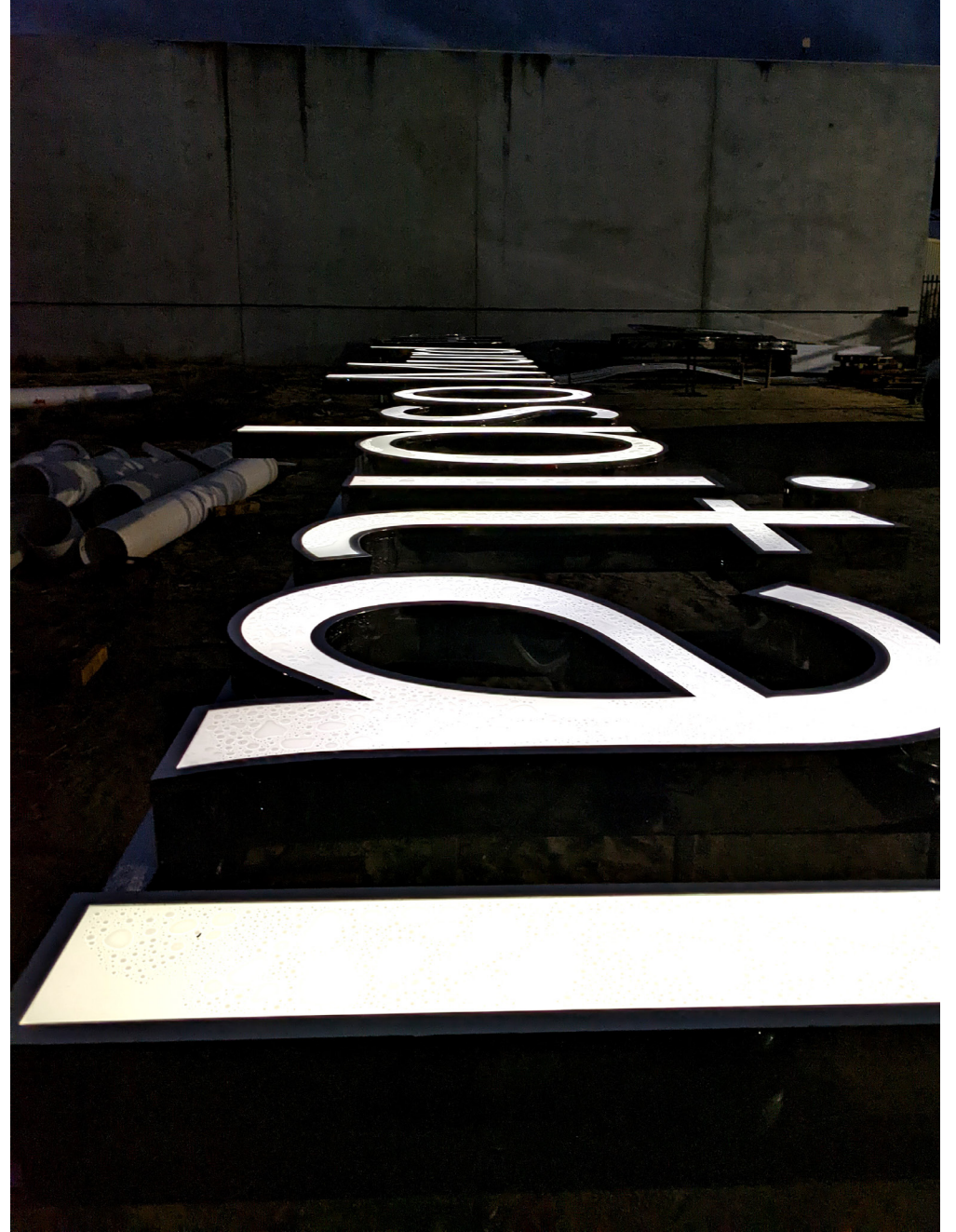
1. MURD
2. OCH H
3. OSPITAL
4. OF GOD
5. OHN
6. LOGO + ST J

The SJGMH emblem, is the tallest part of the sign standing 4.8 metres above the roof. The largest letter, S, stands 2.7 meters tall with the lowercase letters sitting just below at 2.2 metres.

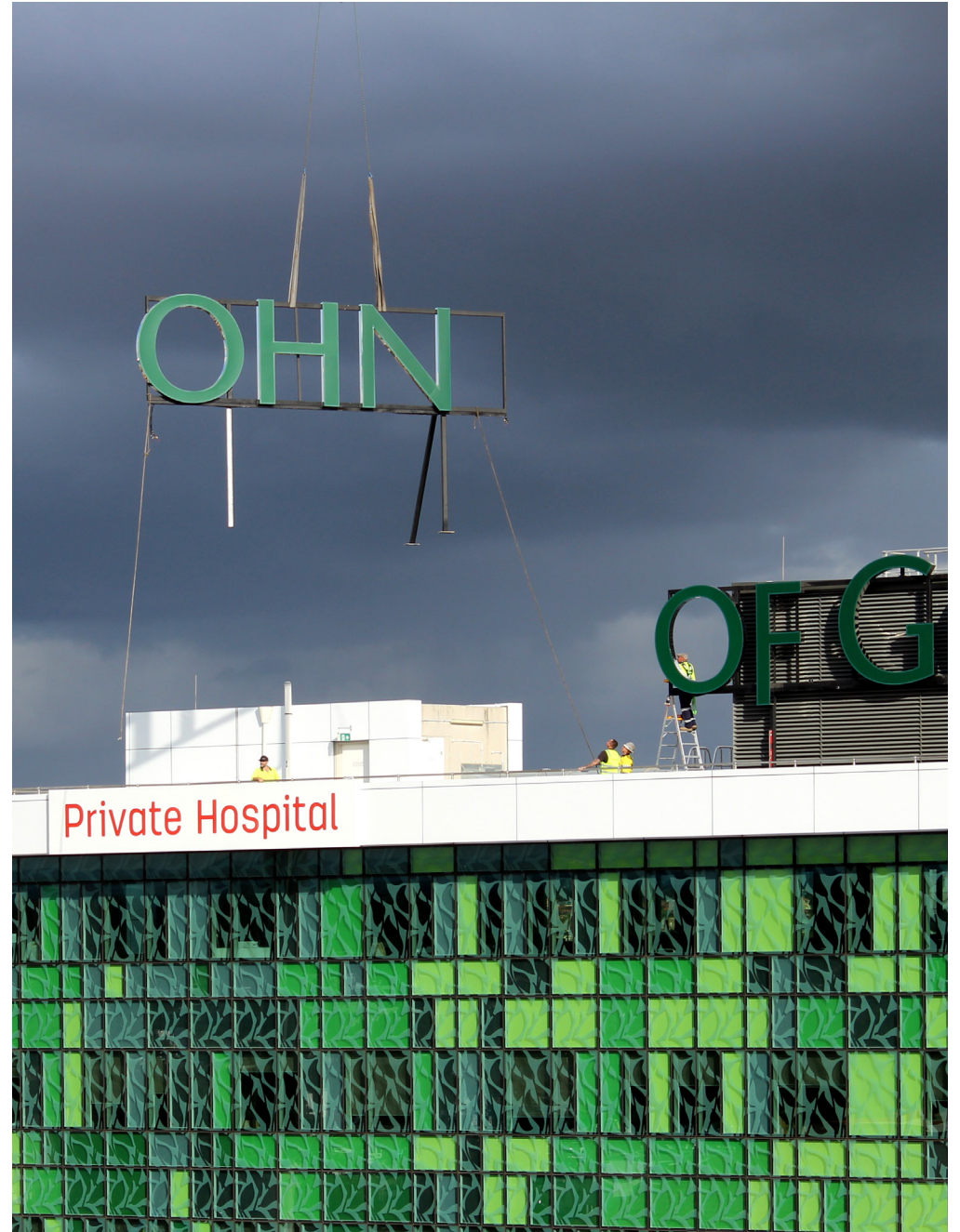
Each letter and the SJGMH emblem was fabricated from stainless steel with illuminated faces with translucent vinyl to let the light pass through.















ST JOHN OF GOD Murdoch Hospital

Private Hospital



MULTIPLEX





Installation

Installing this gigantic sign in one day was a truly remarkable feat. The day was exceptionally well coordinated by Kingman. On the day of the installation, we had 6 installers and 2 project managers on site.

In order to complete the full installation before nightfall, we preloaded one semi-trailer at the factory, and ordered the crane to be delivered and set up on site the day before.

The first layer of the bracket system and framing was also put in place before the day of install. This meant that we could weld each letter to the pre-installed base plates immediately.



Installation

The morning of the install arrived, and our team was in the factory loading the trucks at 5am. We departed, and arrived on site at 6am. Logistically this was a major undertaking, but everyone was ready to get the job done.

We had to manage a 160 foot crane, a 53 meter truck mounted boom and two semi-trailers in a split level car park, within an operating hospital.

There were a number of hurdles to overcome on the day including the unforeseen storm that rolled in just after lunch, slowing the process as we waited for the worst showers to subside before making the next lifts.



Installation

Despite the monumental task and unforeseen weather interruptions, all 7 lifts were completed before dark. By 6pm the crane was unloading its weights and being removed from site leaving the team to finish their final wiring, cabling and switching on of the sign to check and test the functionality of the illumination.

We are incredibly proud of this job. Not only does the sign look amazing, (and can be seen from incredible distances away!), but it was also an impressive team effort from Kingman to complete the job so seamlessly.

Congratulations to everyone involved in this epic project and a huge thanks to SJGMH for choosing Kingman to build and install the largest sky sign in Australia.



ST JOHN OF GOD

Private Hospital

Murdoch Hospital

 **KINGMAN GROUP**

450 Victoria Rd . Malaga WA 6090 | PO Box 2024, Malaga WA 6944
www.kingmangroup.com.au | (08) 9241 9300
abn. 56 009 389 164 | acn. 009 389 164

